



**LS2**  
HELMETS

**HELMETS  
COLLEC-  
TION**

**21 / 22**

**ALWAYS AHEAD**



**LS2**



# Keep looking forward.

Always ahead remains, year after year, our motto. Because we continue writing the history of LS2 with every new product, getting ahead of the future with quality and using the know-how and expertise of today. Our commitment to safety and comfort is the mark of our success.

And success is only achieved by looking forward with the experience of the long road travelled. With hard work and passion we try to make the world a better place one helmet at a time.





**X-Force**

A close-up photograph of a vehicle's front grille. The grille features a prominent orange and black color scheme with sharp, angular designs. A silver badge with the 'X-Force' logo is visible on the right side of the grille. The text 'X-Force' is overlaid in white, bold, sans-serif font across the center of the image.



A close-up, low-angle shot of a black racing helmet. The helmet features prominent red and blue graphics. A blue stripe runs along the top, and red triangular shapes are visible on the side. A clear visor is partially visible, reflecting light. The text "Vector II" is overlaid in a large, white, sans-serif font. In the bottom right corner, there is a small circular logo with a triangle inside and the text "VECTOR II" around it. At the very bottom, there is a yellow label with the text "EMERGENCY TO PULL CHEEK PAD".

# Vector II





# Designed in Barcelona.

Here at LS2 we think of safety, design and functionality when we design our range. The creation of a new helmet is a very specialized affair taking in many different areas of technology.

Our designers, engineers and technicians are all passionate about motorcycling and when designing and producing a new helmet they use this knowledge and passion to create a range of helmets which are better than the last.



## INTRO

<b>Designed in</b> Barcelona	pag. 04
<b>Beauty</b> is on the inside	pag. 07
<b>Outstanding</b> materials	pag. 08
<b>Tecnology</b> for all	pag. 10
<b>Handmade</b> Excellence	pag. 12
<b>Perfect</b> fitting	pag. 15

## ROAD RACE

<b>Thunder C</b> FF805	pag. 18
------------------------	---------

## ROAD TOURING

<b>Challenger C</b> FF327	pag. 28
<b>Challenger HPFC</b> FF327	pag. 31
<b>Vector II</b> FF811	pag. 36
<b>Storm</b> FF800	pag. 44
<b>Stream EVO</b> FF320	pag. 48
<b>Rapid</b> FF353	pag. 50

## URBAN COMMUTER

<b>Valiant II</b> FF900	pag. 53
<b>Valiant</b> FF399	pag. 58
<b>Scope</b> FF902	pag. 60
<b>Strobe</b> FF325	pag. 62

## URBAN DOWNTOWN

<b>Verso</b> OF570	pag. 66
<b>Twister</b> OF573	pag. 68
<b>Spitfire</b> OF599	pag. 70
<b>Sphere Lux</b> OF558	pag. 72
<b>Airflow</b> OF562	pag. 74
<b>Copter</b> OF600	pag. 78

## URBAN UNLIMITED

<b>Bob C</b> OF601	pag. 84
<b>Bob HPFC</b> OF601	pag. 88
<b>Infinity</b> OF521	pag. 90

## OFF ROAD

<b>X-Force</b> MX703	pag. 94
<b>Subverter</b> MX700	pag. 102
<b>Explorer C</b> MX701	pag. 106
<b>Explorer HPFC</b> MX701	pag. 110
<b>Pioneer EVO</b> MX436	pag. 112
<b>Fast EVO</b> MX437	pag. 114

## MINI

<b>Rapid Mini</b> FF353	pag. 118
<b>Funny</b> OF602	pag. 120
<b>Fast EVO</b> MX437	pag. 122



# NOP

We believe in the uniqueness of people, in those who give life to our helmets every day and go out into the streets making their daily lives one-of-a kind. People who are diverse but having, nevertheless, a lot in common. Our “Not Ordinary People Series” is a tribute to people who enjoy life in a different way.







# Beauty is on the inside.

Each LS2 helmet, either in Carbon, HPFC, KPA or HPTT is composed of three main elements, the external shell, an internal shock absorbing EPS and numerous accessories such as comfort linings, retention systems, visor and more.





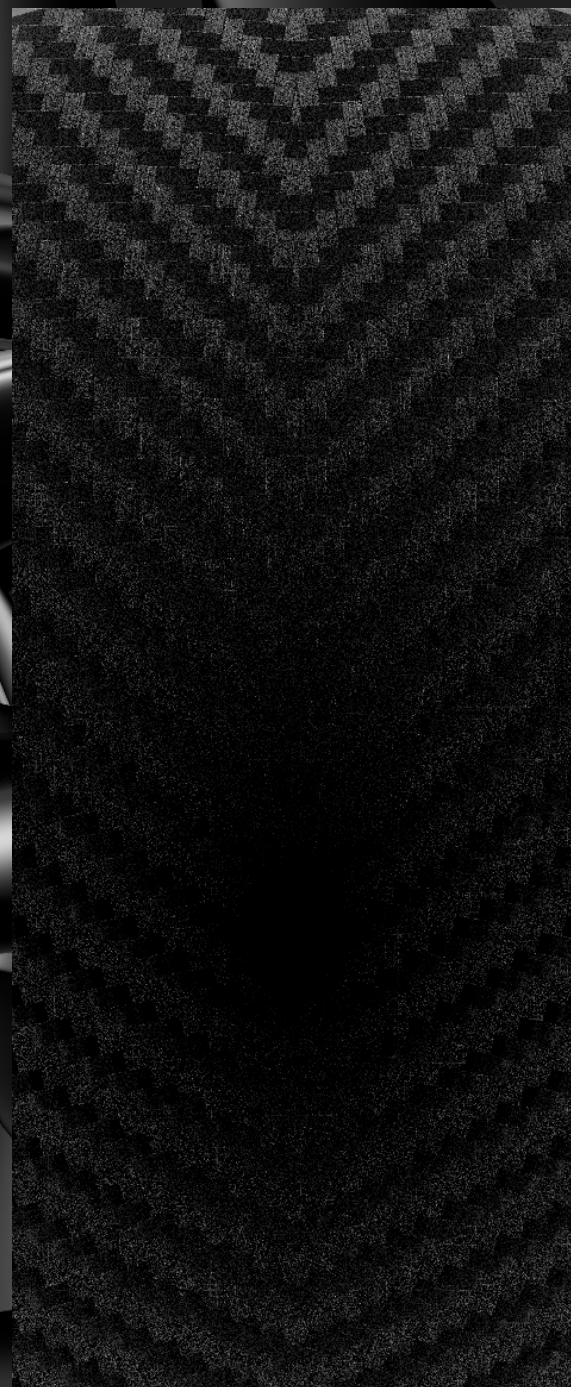
High Performance Fibre Composite is a carefully layered blend of a unique weave of fibres pre-impregnated with resin into a strong, ultra lightweight, but rigid shell that accepts an impact while dispersing energy for a safer ride.

# Outstanding Materials



Carbon Fibre is a material used extensively in the aeronautical industry and of course in the highly competitive world of Formula 1 and MotoGP. It has incredible strength but it's extremely light.

LS2 uses multiple layers of our exclusive wide-weave carbon fibre for a very light, but strong shell that handles impacts in the most efficient and safe way.

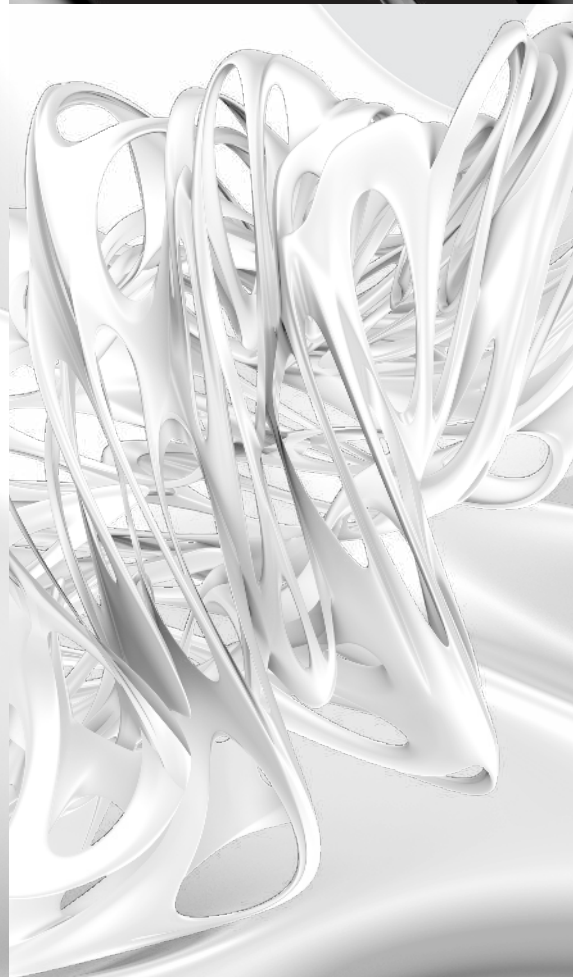






KPA  
KINETIC  
POLYMER  
ALLOY

A proprietary blend of polycarbonate, space age thermoplastics and additional materials specifically formulated by LS2, KPA: Kinetic Polymer Alloy, offers ultra-light weight and high penetration resistance, but with some flexibility for the ultimate in energy dispersion. This special formula meets both ECE 22.05 and DOT requirements.



HPTT  
HIGH PRESSURE  
THERMOPLASTIC  
TECHNOLOGY

In an exclusive process developed by our researchers named HPTT (High Pressure Thermoplastic Technology) a mix of ABS is injected in moulds. The moulds used in this high precision industrial process are sculpted from blocks of metal weighing several hundred kilos.

# Technology for all.

Engineers and developers at LS2 look at all the needs of the market every day and are always on the quest for new technology to incorporate into our products.

We still however maintain our principle of making such technology affordable for the greatest number of riders. Therefore each helmet we produce benefits from this work ethic making each helmet functional for those who ride everyday.







## R&D

Designers, engineers and technicians at R&D Center are all two-wheel lovers and they put their knowledge and passion in the design of each new model, to create more contemporary helmets with a look to safety and functionality. They spend a lot of hours to analyse every detail of shells and liners, resistance of the structure and comfort, aerodynamics and ventilation systems. Each step has the goal to develop a product in accordance with each potential user that requires from his helmet the maximum level of quality, comfort and style.



# Handmade Excellence.

Once a shell has been removed from its mold it is checked by our technical experts to make sure it meets our exacting standards.

The shell is then coated with several layers of the base colour paint and then the graphics are applied by hand using decals placed by our skilled manufacturers.

Lastly, the helmet is lacquered with an anti UV coating to ensure the colour remains as good as the first day and to give an extra layer of protection to all the materials beneath.

## Precision Assembly.

The final assembly of a helmet is then undertaken by a technician who follows a strict process for fitting the EPS liner, retention strap and visor mechanism. And finally the comfort liner and user instructions. Each helmet then has a final quality check before being boxed ready for dispatch.

# Permanent Quality Control.

A certain number of our helmets are never sold as we batch test every model in our test laboratory. Each helmet is looked at in minute detail to ensure that quality and safety are exceptional. We also verify that each model meets or exceeds the test standard required by its country of destination. This may be ECE, DOT, BSI or SNELL.





Compatible with all the LS2 full face models, Pinlock is the leading anti-fog system. It keeps fog from forming under high humidity conditions, no matter what the weather conditions are, ensuring clear, sharp vision and contributing to safe driving.



# Optimal Vision

Perfect vision is essential to ensure safety on the road. For this reason all our visors are built with a 3D Optically Correct "A Class" Polycarbonate, a material with high resistance to impact, that avoids distortion and offers maximum clarity.

Additionally, most of our helmets are available with an integrated sun visor, making them suitable for any kind of ride.





# Perfect Fitting

To ensure good protection the helmet must fit your head to perfection, special attention should be paid to the shell shape design and materials to minimize the effects of a possible impact. It is key to obtain a perfect fit to your head from outside to inside, as well as the shell, the configuración of the EPS liner, which should match closely the human head shape.



**Thunder** FF805

ROADRACE  
ROADRACE  
ROADRACE  
**ROADRACE**  
ROAD**RACE**  
ROADRACE  
ROADRACE  
ROADRACE  
ROADRACE



LS2  
THUNDER

## Certified ECE 22.06 & DOT

Meets or exceeds DOT and ECE certification. Covered by a 5-year WARRANTY against defects in materials and workmanship.

**GR 1420 ± 50**

## 3 SHELL SIZES

LONG OVAL

2XS-XS-S / M-L / XL-2XL-3XL

## CARBON

Carbon Fibre is a material used extensively in the aeronautical industry and of course in the highly competitive world of Formula 1 and MotoGP. It has incredible strength but it's extremely light. LS2 uses multiple layers of our exclusive wide-weave carbon fibre for a very light, but strong shell that handles impacts in the most efficient and safe way.

## RACING HELMET

We are proud to introduce the Thunder. Fit. Finish. Function. Performance. The Thunder will face the competition head-to-head and feature-for-feature. Bold. Unafraid.

## CONFORT

LS2's performance wicking fabric is hypoallergenic. It pulls moisture and perspiration away from the rider and dries quickly, keeping the rider cool and comfortable.

CHIN CURTAIN  
LINER WASHABLE  
BREATHABLE  
HYPOALLERGENIC  
LASER-CUT  
FOAM

SAFETY REFLECTIVE PATCH

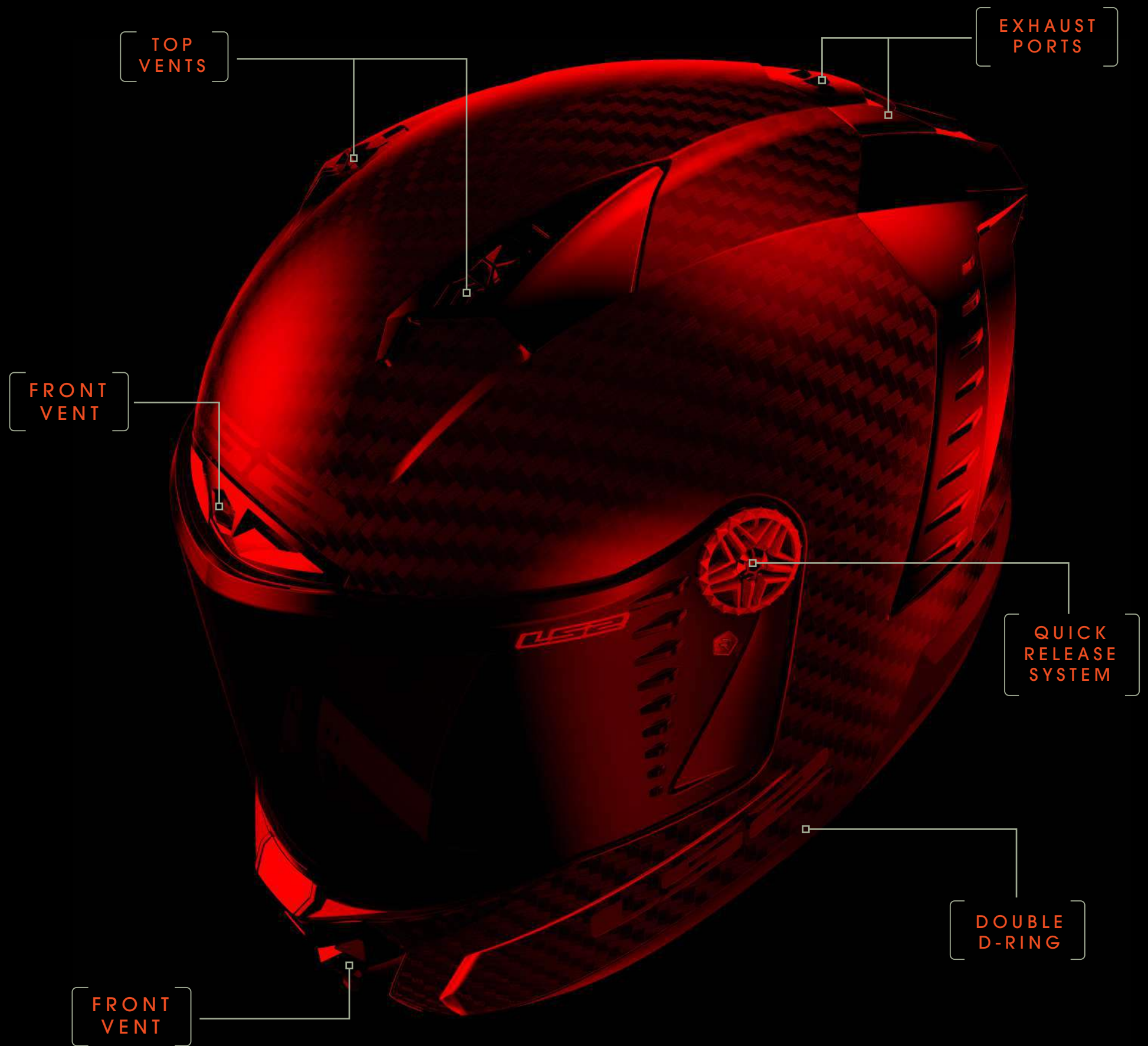
DOUBLE D RING

EMERGENCY RELEASE SYSTEM

REINFORCED CHIN STRAP

MULTI-DENSITY EPS







## THE COOLEST HELMET

The adjustable chin vent is dual-ported to assist while keeping the shield free from fog, while also keeping the rider cool and comfortable.

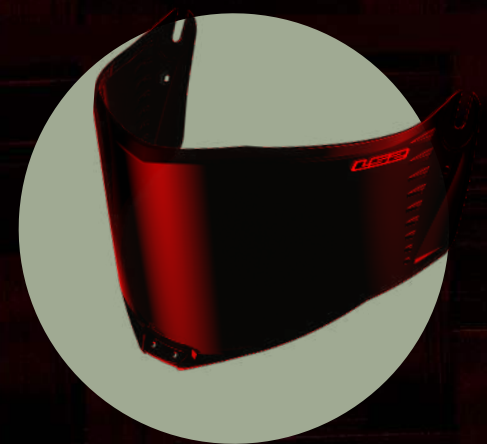


## A PERFECT FITTING

It is key to obtain a perfect fit to your head from outside to inside, as well as the shell, the configuración of the EPS liner, which should match closely the human head shape.

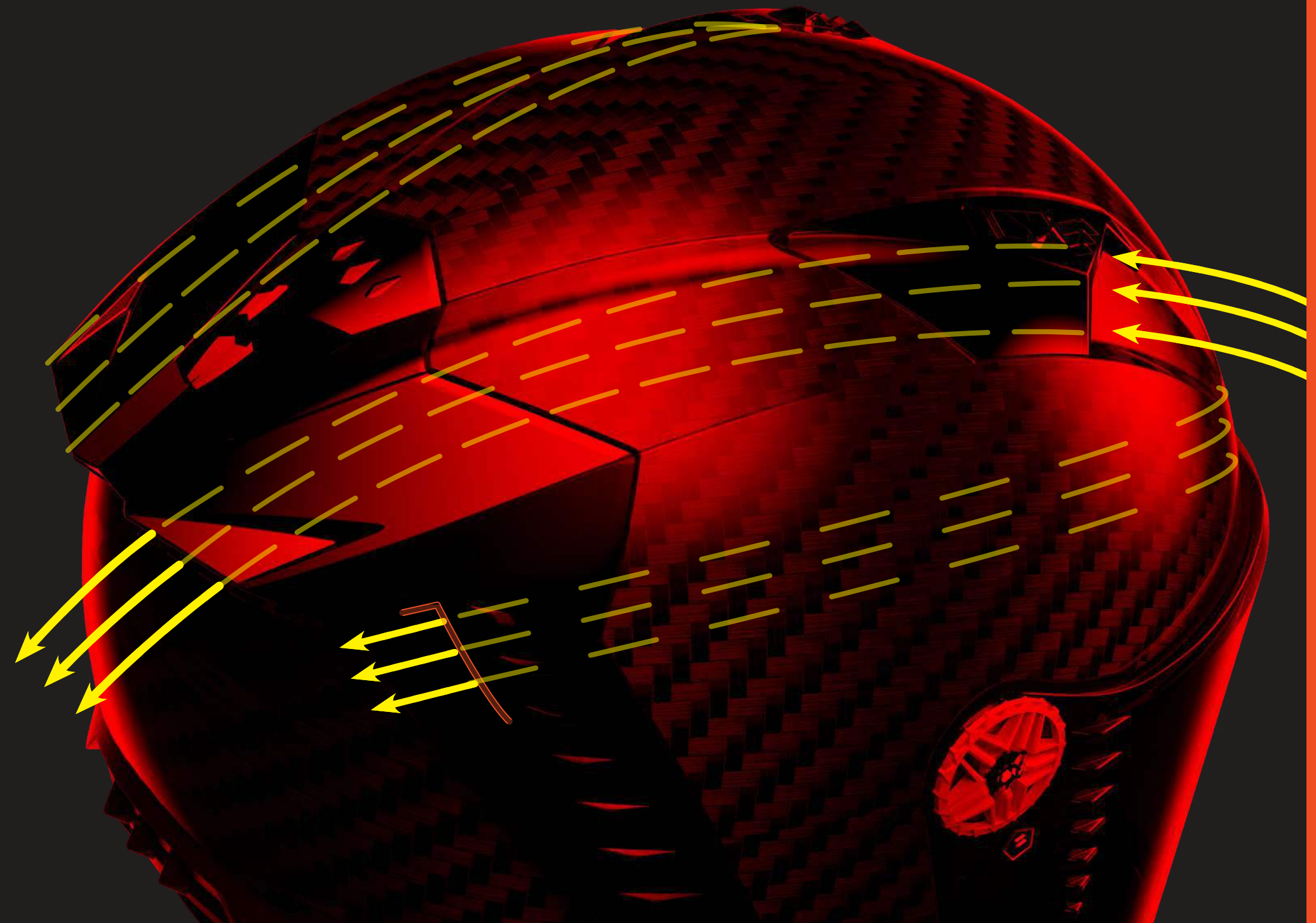
## VISOR

UV RESISTANT  
READY FOR TEAR OFF  
PINLOCK MAX VISION  
QUICK RELEASE SYSTEM



# VENTILATION

MULTIPLE EXHAUST PORTS  
CHANNELED EPS  
MULTIPLE TOP VENTS







FF805

# Thunder

## Shell

Certified ECE 22.06  
GR 1400  $\pm$  50  
Made of Carbon 6K  
(with aramide fibers)  
3 Shells  
Long Oval

## Safety

Double D Ring  
Reinforced Chin Strap  
Emergency Release System  
Multi - Density EPS  
Reflective Safety Patch  
Visor Button Lock

## Ventilation

Channelled EPS  
Chin Vent  
Front Vent  
Top Vents  
Spoiler Exhaust Ports  
Breath Deflector

## 3 Shell Sizes

XS - S

M - L

XL - 2XL

## Visor

Wide Visor  
Twin Shield System  
Quick Release System  
Scratch Resistant  
UV Resistant  
Ready for Pinlock Max Vision

## Comfort Liner

X-Static© Silver Liner Fabric (FIM model)  
Laser-Cut Foam  
Removable and Washable  
Breathable  
Hypoallergenic  
Chin Curtain





SOLID  
Carbon  
10805 70 99



RACING1  
Matt H-V Yellow  
10805 80 54



RACING1  
Red White  
10805 80 02



NEW

RACING1  
Blue White  
10805 86 26



SPUTNIK  
Metal Red  
10805 82 32



NEW

SUPRA  
Fluo Green White  
10805 85 60



NEW

SUPRA  
Red Blue  
10805 85 32



SOLID FIM  
Carbon  
10805 51 99



9K   
CARBON

X-Static® Silver Liner Fabric

x-static

CERTIFIED ECE 22.06





# Thunder





# FF805

ALWAYS AHEAD



**Challenger C** FF327

**Challenger HPFC** FF327

**Vector II HPFC** FF811

**Storm** FF800

**Stream EVO** FF320

**Rapid** FF353

[illegible]





FF327

# challenger c

## Shell

Certified ECE 22.05 & DOT  
1350 ± 50gr  
3 Shells Sizes  
Made of Carbon  
Long Oval

## Safety

Micrometric Metal Buckle  
Emergency Release System  
Reinforced Chin Strap  
Metal Security Plate  
Reflective Safety Patch  
Multi-Density EPS

## Ventilation

Channelled EPS  
Front Vent  
Top Vents  
Chin Vent  
Exhaust Ports  
Breath Deflector

## 3 Shell Sizes

2XS - XS - S

M - L

XL - 2XL - 3XL

## Visor

Wide Visor  
Twin Shield System  
Quick Release System  
Scratch Resistant  
UV Resistant  
Ready for Pinlock Max Vision

## Comfort Liner

Laser - Cut Foam  
Removable & Washable  
Breathable & Hypoallergenic  
Chin Curtain





SOLID  
Carbon  
10327 70 99



FLAMES  
White H-V Yellow  
10327 75 54



FOLD  
Carbon H-V Yellow  
10327 76 54



FOLD  
Carbon Red  
10327 76 32



NEW

ALLOY  
Titanium Chrome Orange  
10327 80 52



NEW

ALLOY  
White Blue Red  
10327 80 32



NEW

THORN  
H-V Yellow  
10327 81 54



NEW

THORN  
Pink  
10327 81 46



NEW

THORN  
Military Green  
10327 81 62



NEW

SPORTY  
White  
10327 82 02





challenger c





FF327

ALWAYS AHEAD





FF327

# Challenger HPFC

## Shell

Certified ECE 22.05 & DOT  
1420 ± 50gr  
Made of HPFC  
3 Shells  
Long Oval

## Safety

Micrometric Metal Buckle  
Emergency Release System  
Reinforced Chin Strap  
Metal Security Plate  
Reflective Safety Patch  
Multi-Density EPS

## Ventilation

Channelled EPS  
Front Vent  
Top Vents  
Chin Vent  
Exhaust Ports  
Breath Deflector

## 3 Shell Sizes

2XS - XS - S

M - L

XL - 2XL - 3XL

## Visor

Wide Visor  
Twin Shield System  
Quick Release System  
Scratch Resistant  
UV Resistant  
Ready for Pinlock Max Vision

## Comfort Liner

Laser-Cut Foam  
Removable and Washable  
Breathable  
Hypoallergenic  
Chin Curtain





**SOLID**  
White  
10327 10 02



**SOLID**  
Matt Titanium  
10327 10 07



**SOLID**  
Matt Black  
10327 10 11



**JEANS**  
Titanium  
10327 19 08



**ALLERT**  
Matt Titanium Silver  
10327 39 03



**ALLERT**  
Matt Titanium H-V Yellow  
10327 39 53



**GALACTIC**  
Blue Fluo Orange  
10327 40 52



**GALACTIC**  
White H-V Yellow Blue  
10327 40 54



**NEW**

**SPIN**  
Black Red White  
10327 50 02



**NEW**

**SPIN**  
Black Titanium Fluo Pink  
10327 50 46



**NEW**

**SPIN**  
Matt Black Cobalt H-V Yellow  
10327 50 53





challenger HPFC





FF327



ALWAYS AHEAD





**CERTIFIED ECE 22.06 & DOT**  
**1350 ± 50GR**

# 3 SHELL SIZES

LONG OVAL

2XS-XS-S / M-L / XL-2XL-3XL

**HPFC**  
**HPFC**

HIGH PERFORMANCE  
FIBERS COMPOSITE

High Performance Fibers Composite is a carefully layered blend of a unique weave of fibres pre-impregnated with resin into a strong, ultra lightweight, but rigid shell that accepts an impact while dispersing energy for a safer ride.



Quick Release System



## OPTIMAL VISION

Perfect vision is essential to ensure safety on the road. For this reason all our visors are built with a 3D Optically Correct "A Class" Polycarbonate, a material with high resistance to impact, that avoids distortion and offers maximum clarity. Additionally, most of our helmets are available with an integrated sun visor, making them suitable for any kind of ride.

**TWIN SHIELD SYSTEM**  
**QUICK RELEASE SYSTEM**  
**SCRATCH RESISTANT**  
**UV RESISTANT**  
**FOG RESISTANT**  
**PINLOCK MAX VISION READY**





MICROMETRIC STEEL BUCKLE

EMERGENCY RELEASE SYSTEM

METAL SECURITY PLATE

METAL SECURITY PLATE

REFLECTIVE SAFETY PATCH

MULTI-DENSITY EPS



# 2<sup>ST</sup> STEP FRONT VENT



## SAFETY

To ensure good protection the helmet must fit your head to perfection, special attention should be paid to the shell shape design and materials to minimize the effects of a possible impact. It is key to obtain a perfect fit to your head from outside to inside, as well as the shell, the configuración of the EPS liner, which should match closely the human head shape.

**MICROMETRIC STEEL BUCKLE**  
**EMERGENCY RELEASE SYSTEM**  
**METAL SECURITY PLATE**  
**REFLECTIVE SAFETY PATCH**  
**MULTI-DENSITY EPS**



REMOVABLE & WASHABLE  
BREATHABLE  
HYPOALLERGENIC  
LASER-CUT FOAM  
CHIN CURTAIN

# COMFORT LINER





FF811

# Vector II HPFC

## Shell

Certified ECE 22.06 & DOT  
1350 ± 50gr  
Made of HPFC  
3 Shells  
Long Oval

## Safety

Micrometric Steel Buckle  
Emergency Release System  
Metal Security Plate  
Reflective Safety Patch  
Multi - Density EPS  
Neck Roll

## Ventilation

Channelled Ports  
Top Vent  
2 Step Front Vent  
Chin Vent  
Exhaust Port  
Breath Deflector

## 3 Shell Sizes

2XS - XS - S

M - L

XL - 2XL - 3XL

## Visor

Twin Shield System  
Quick Release System  
Scratch Resistant  
UV Resistant  
Fog Resistant  
Ready for Pinlock Max Vision

## Comfort Liner

Laser-Cut Foam  
Removable and Washable  
Breathable  
Hypoallergenic  
Chin Curtain  
Magna-Tech Liner





NEW

SOLID  
White  
10811 10 02



NEW

SOLID  
Matt Titanium  
10811 10 07



NEW

SOLID  
Matt Black  
10811 10 11



NEW

SOLID  
Nardo Grey  
10811 10 06



NEW

SPLITTER  
Black White  
10811 20 12



NEW

SPLITTER  
Matt Titanium Red  
10811 20 31



NEW

SPLITTER  
Matt Titanium H-V Yellow  
10811 20 53



NEW

TROPICAL  
Black White  
10811 21 12



NEW

TECHBOT  
Matt Titanium H-V Yellow  
10811 22 53



NEW

METRIC  
White Titanium Silver  
10811 23 08



NEW

ABSOLUTE  
Matt Black Red Blue  
10811 24 31



NEW

ABSOLUTE  
Matt Black Silver Titanium  
10811 24 03



NEW

STYLUS  
Fluo Orange Black  
10811 25 52



NEW

STYLUS  
White Fluo Pink  
10811 25 02





**Vector II HPFC**



FF811

NEW Model  
2 0 2 1 / 2

ALWAYS AHEAD





Vector II HPFC





FF811

NEW Model  
2 0 2 1 / 2

ALWAYS AHEAD





# FF800 Storm

## Shell

Certified ECE 22.05 & DOT  
1400 ± 50gr  
Made of KPA  
2 Shells  
Oval

## Safety

Micrometric Metal Buckle  
Reflective Safety Patch  
Multi - Density EPS

## Ventilation

Top Vent  
Chin Vent  
Exhaust Ports  
Breath Deflector

## 2 Shell Sizes

2XS - XS - S - M

L - XL - 2XL - 3XL

## Visor

Twin Shield System  
Quick Release System  
Scratch Resistant  
UV Resistant  
Ready for Pinlock Max Vision

## Comfort Liner

Laser-Cut Foam  
Removable & Washable  
Extra Comfort Liner  
Hypoallergenic  
Chin Curtain





SOLID  
White  
10800 10 02



SOLID  
Matt Titanium  
10800 10 07



SOLID  
Matt Black  
10800 10 11



SOLID  
Black  
10800 10 12



SOLID  
Nardo Grey  
10800 37 04



JEANS  
Titanium  
10800 19 08



NERVE  
Matt Black Red  
10800 20 32



NERVE  
Matt Black H-V Yellow  
10800 20 60



RACER  
Blue Red  
10800 21 32



RACER  
Matt Titanium Orange  
10800 21 52



RACER  
Matt Blue  
10800 21 22



FASTER  
Matt Titanium  
10800 22 07



SLANT  
Matt Blue Fluo Orange  
10800 25 52



NEW

VELVET  
Black Rainbow  
10800 30 12



NEW

DROP  
Black Yellow Red  
10800 31 54



NEW

SPRINTER  
Black Red Titanium  
10800 32 32



NEW

SPRINTER  
Matt Black Silver Cobalt  
10800 32 03



NEW

MCPHEE REPLICA  
Blue White  
10800 33 26



NEW

NEPA REPLICA  
H-V Yellow Black  
10800 34 54



NEW

SALVADOR REPLICA  
Blue H-V Yellow  
10800 35 26





storm





FF800

ALWAYS AHEAD





# FF320 Stream

## Shell

Certified ECE 22.05 & DOT  
1550 ± 50gr  
Made of HPTT  
1 Shell  
Long Oval

## Safety

Micrometric Buckle  
Reflective Safety Patch  
Neck Roll

## Ventilation

Top Vents  
Chin Vent  
Exhaust Port  
Breath Deflector

## 1 Shell Size

2XS - XS - S - M - L - XL - 2XL

## Visor

Twin Shield System  
Quick Release System  
Scratch Resistant  
UV Resistant  
Ready For Pinlock Max Vision

## Comfort Liner

Laser - Cut Foam  
Removable & Washable  
Breathable  
Hypoallergenic  
Chin Curtain





**SOLID**  
White  
10320 40 02



**SOLID**  
Matt Black  
10320 40 11



**SOLID**  
Black  
10320 40 12



**JINK**  
Matt Black H-V Yellow  
10320 42 54



**THRONE**  
Matt Black Titanium  
10320 54 07



**TACHO**  
White Black Red  
10320 55 02



**TACHO**  
Blue H-V Yellow  
10320 55 26



**MERCURY**  
Matt Titanium Purple  
10320 56 74



**NEW**

**LOOP**  
Black Red  
10320 70 32



**NEW**

**LOOP**  
Blue Fluo Pink  
10320 70 46



**NEW**

**LOOP**  
Black Fluo Orange  
10320 70 52





FF353

# Rapid

## Shell

Certified ECE 22.05 & DOT  
1300 ± 50gr  
Made of HPTT  
2 Shells  
Long Oval

## Safety

Micrometric Buckle  
Neck Roll

## Ventilation

Chin Vent  
Top Vents  
Exhaust Port  
Breath Deflector

## 2 Shell Sizes

XS - S - M

L - XL - 2XL - 3XL

## Visor

Quick Release System  
Scratch Resistant  
UV Resistant  
Ready For Pinlock Max Vision

## Comfort Liner

Laser - Cut Foam  
Neck Roll  
Chin Curtain  
Removable & Washable  
Breathable  
Hypoallergenic





SOLID  
White  
10353 10 02



SOLID  
Matt Titanium  
10353 10 07



SOLID  
Matt Black  
10353 10 11



SOLID  
Black  
10353 10 12



POPPIES  
Pink  
10353 20 46



DEADBOLT  
Matt Black Orange  
10353 24 51



BOHO  
White Black Pink  
10353 26 15



CIRCLE  
Matt Titanium Orange  
10353 35 52



HAPPY DREAMS  
Black  
10353 42 12



STRATUS  
Black Red Silver  
10353 45 32



STRATUS  
Blue Red White  
10353 45 02



GALE  
Matt Black Blue H-V Yellow  
10353 46 25



PLAYER  
H-V Yellow Black  
10353 60 54



PLAYER  
Black Sky Blue  
10353 60 12



XTREET  
Matt Black Red  
10353 61 31



XTREET  
Matt Blue Purple  
10353 61 73



**Valiant II** FF900

**Valiant** FF399

**Scope** FF902

**Strobe** FF325

URBAN  
COMMUTER  
URBAN  
COMMUTER  
**URBAN  
COMMUTER**  
URBAN  
COMMUTER  
URBAN  
COMMUTER  
URBAN  
COMMUTER





FF900

# Valiant II

## Shell

Double homologation P/J  
Certified ECE 22.05 & DOT  
1700 ±50gr  
Made of KPA  
2 Shells  
180° Flip-Up Chin Bar  
Long Oval

## Safety

Micrometric Metal Buckle  
Reinforced Chin Strap  
Multi-Density EPS  
Reflective Safety Details

## Ventilation

Channelled EPS  
Chin Vent  
Top Vents  
Exhaust Ports

## 2 Shell Sizes

XS - S - M - L

XL - 2XL - 3XL

## Visor

Twin Shield System  
Quick Release System  
Scratch Resistant  
UV Resistant  
Ready for Pinlock Max Vision

## Comfort Liner

Extra Comfort Liner  
Laser - Cut Foam  
Removable and Washable  
Hypoallergenic  
Breathable  
Chin Curtain





**SOLID**  
White  
50900 10 02



**SOLID**  
Matt Titanium  
50900 10 07



**SOLID**  
Matt Black  
50900 10 11



**SOLID**  
Black  
50900 10 12



**SOLID**  
Matt Blue  
50900 10 25



**NOIR**  
Matt Black  
50900 14 11



**JEANS**  
Titanium  
50900 19 08



**ORBIT**  
Jeans  
50900 20 08



**REVO**  
White Red Blue  
50900 22 32



**REVO**  
Matt Black H-V Yellow  
50900 22 54



**HUB**  
White Silver  
50900 24 02



**HUB**  
Black Chrome  
50900 24 12



**CITIUS**  
White Blue  
50900 25 26



**SPECIAL**  
Matt Silver  
50900 30 03



**SPECIAL**  
Matt Sand  
50900 30 17



**CODEX**  
White Black  
50900 31 02



**CODEX**  
Matt Black Titanium  
50900 31 11



**COOPER**  
White Blue  
50900 32 02



**COOPER**  
Matt Titanium Black  
50900 32 07



**VELUM**  
Matt Blue Fluo Pink  
50900 33 25





# Valiant II





FF900

ALWAYS AHEAD





FF399

# Valiant

## Shell

Double homologation P/J  
Certified ECE 22.05 & DOT  
1700 ±50gr  
Made of KPA  
180° Flip-Up Chin Bar  
2 Shells  
Long Oval

## 2 Shell Sizes

2XS - XS - S - M

L - XL - 2XL - 3XL

## Safety

Micrometric Steel Buckle  
Reinforced Chin Strap  
Reflective Safety Patch  
Multi - Density EPS

## Visor

Twin Shield System  
Quick Release System  
Scratch Resistant  
UV Resistant  
Air Diffuser  
Ready For Pinlock Max Vision

## Ventilation

Channelled EPS  
Chin Vent  
Top Vent  
Exhaust Port

## Comfort Liner

Laser - Cut Foam  
Removable and Washable  
Hypoallergenic  
Breathable  
Neck Roll





SOLID  
White  
50399 10 02



SOLID  
Matt Titanium  
50399 10 07



SOLID  
Matt Black  
50399 10 11



SOLID  
Black  
50399 10 12





# FF902 Scope

## Shell

Certified ECE 22.05 & DOT  
1650  $\pm$ 50gr  
Made of HPTT  
90° Flip-Up Chin Bar  
3 Shells  
Long Oval

## Safety

Micrometric Buckle  
Reinforced Chin Strap  
Multi-Density EPS  
Reflective Safety Patch

## Ventilation

Chin Vent  
Top Vent  
Exhaust Ports  
Breath Deflector

## 3 Shell Sizes

2XS - XS - S

M - L

XL - 2XL - 3XL

## Visor

Twin Shield System  
Quick Release System  
Scratch Resistant  
UV Resistant  
Ready For Pinlock Max Vision

## Comfort Liner

Extra Comfort Liner  
Laser-Cut Foam  
Removable and Washable  
Hypoallergenic  
Breathable  
Chin Curtain





**SOLID**  
White  
50902 10 02



**SOLID**  
Matt Titanium  
50902 10 07



**SOLID**  
Matt Black  
50902 10 11



**SOLID**  
Black  
50902 10 12



**SOLID**  
Nardo Grey  
50902 37 04



**SKID**  
Black H-V Yellow  
50902 20 54



**AXIS**  
Matt Black Titanium  
50902 21 08



**ARCH**  
White Titanium  
50902 22 08



**ARCH**  
Matt Titanium Pink  
50902 22 46





FF325

# Strobe

## Shell

Certified ECE 22.05 & DOT  
1550 ±50gr  
Made of HPTT  
90° Flip-Up Chin Bar  
Long Oval  
2 Shells

## Safety

Micrometric Buckle  
Reflective Safety Patch  
Multi - Density EPS

## Ventilation

Channelled EPS  
Top Vent  
Chin Vent

## 2 Shell Sizes

2XS - XS - S - M

L - XL - 2XL

## Visor

Twin Shield System  
Quick Release System  
Scratch Resistant  
UV Resistant  
Ready For Pinlock

## Comfort Liner

Laser - Cut Foam  
Removable and Washable  
Hypoallergenic  
Breathable  
Chin Curtain





SOLID  
White  
50325 10 02



SOLID  
Matt Titanium  
50325 10 07



SOLID  
Matt Black  
50325 10 11



SOLID  
Black  
50325 10 12



**Verso** OF570

**Twister** OF573

**Spitfire** OF599

**Sphere Lux** OF558

**Airflow** OF562

**Copter** OF600

**URBAN**

DOWNTOWN

URBAN

DOWNTOWN

URBAN

DOWNTOWN

URBAN

DOWNTOWN

URBAN

**DOWNTOWN**





OF570

# Verso

## Shell

Certified ECE 22.05 & DOT  
1250 ± 50gr  
Made of KPA  
2 Shells  
Oval

## Safety

Steel Micrometric Buckle  
Reinforced Chin Strap  
Reflective Safety Patch  
Multi - Density EPS  
Neck Roll

## Ventilation

Channelled EPS  
Top Vents  
Exhaust Ports  
Air Diffuser

## 2 Shell Sizes

2XS - XS - S - M - L

XL - 2XL - 3XL

## Visor

Twin Shield System  
Quick Release System  
Scratch Resistant  
UV Resistant  
Vortex Generator

## Comfort Liner

Laser-Cut Foam  
Removable and Washable  
Breathable  
Hypoallergenic





**SOLID**  
White  
30570 10 02



**SOLID**  
Matt Titanium  
30570 10 07



**SOLID**  
Matt Black  
30570 10 11



**SOLID**  
Nardo Grey  
30570 37 04



**MARKER**  
Matt Black Titanium  
30570 23 07



**NEW**

**SPRING**  
White Pink  
30570 30 46



**NEW**

**SPRING**  
Matt Silver Blue  
30570 30 25





OF573

# Twister

## Shell

Certified ECE 22.05 & DOT  
1100 ± 50gr  
Made of HPTT  
2 Shells  
Oval

## Safety

Quick Release Buckle  
Reinforced Chin Strap  
Multi - Density EPS

## Ventilation

Channelled EPS  
Top Vents  
Exhaust Ports

## 2 Shell Sizes

XS - S - M

L - XL - 2XL

## Visor

Twin Shield System  
Quick Release System  
Scratch Resistant  
UV Resistant

## Comfort Liner

Laser-Cut Foam  
Removable and Washable  
Breathable  
Hypoallergenic





**SOLID**  
White  
30573 30 02



**SOLID**  
Matt Titanium  
30573 30 07



**SOLID**  
Matt Black  
30573 30 11



**COMBO**  
White Green Red  
30573 41 02



**XOVER**  
Matt Titanium Black Blue  
30573 42 21



**XOVER**  
Matt Titanium Purple  
30573 42 74



**NEW**

**LUNA**  
Matt Blue White  
30573 50 25



**NEW**

**LUNA**  
White Silver  
30573 50 02



**NEW**

**LUNA**  
Matt Black Titanium  
30573 50 11





# OF599 Spitfire

## Shell

Certified ECE 22.05 & DOT  
1000 ± 50gr  
Made of HPTT  
2 Shells  
Oval

## Safety

Micrometric Buckle  
Reinforced Chin Strap  
Multi - Density EPS

## Inner Sun Visor

2 Steps Sun Visor  
Scratch Resistant  
UV Resistant

## 2 Shell Sizes

XS - S - M - L

XL - 2XL

## Comfort Liner

Extra Comfort Liner  
Laser-Cut Foam  
Removable and Washable  
Breathable  
Hypoallergenic





**SOLID**  
Matt Titanium  
30599 10 07



**SOLID**  
Matt Black  
30599 10 11



**JEANS**  
Titanium  
30599 19 08



**BLACK FLAG**  
Matt Black Titanium  
30599 26 11





OF558

# Sphere Lux

## Shell

Certified ECE 22.05 & DOT  
1000 ± 50gr  
Made of HPTT  
1 Shell  
Oval

## Safety

Micrometric Buckle  
Multi - Density EPS

## Visor

Quick Release System  
Scratch Resistant  
UV Resistant

## 1 Shell Size

XS - S - M - L - XL - 2XL

## Comfort Liner

Laser-Cut Foam  
Removable and Washable  
Breathable  
Hypoallergenic





**SOLID**  
White  
30558 50 02



**SOLID**  
Matt Black  
30558 50 11



**SOLID**  
Matt Titanium  
30558 50 07



**SOLID**  
Matt Military Green  
30558 50 61



**SOLID**  
Fluo Pink  
30558 50 14



**SOLID**  
Nardo Grey  
30558 37 04



**BLOOM**  
Blue Pink  
30558 61 26



**LINUS**  
Nardo Grey  
30558 64 04



**LINUS**  
Cobalt  
30558 64 24



**NEW**

**FIRM**  
White Green Red  
30558 70 60



**NEW**

**FIRM**  
Matt Black Titanium  
30558 70 07



**NEW**

**SKATER**  
H-V Yellow  
30558 71 54



**NEW**

**SKATER**  
Matt Red  
30558 71 31





OF562

# Airflow

## Shell

Certified ECE 22.05 & DOT  
950 ± 50gr  
Made of HPTT  
1 Shell  
Oval

## Safety

Micrometric Buckle  
Multi - Density EPS

## Ventilation

Channelled EPS  
Top Ven

## 1 Shell Size

2XS - XS - S - M - L - XL - 2XL

## Visor

Quick Release System  
Scratch Resistant  
UV Resistant

## Comfort Liner

Laser-Cut Foam  
Removable and Washable  
Breathable  
Hypoallergenic





SOLID  
White  
30562 50 02



SOLID  
Silver  
30562 50 04



SOLID  
Matt Black  
30562 50 11



SOLID  
Black  
30562 50 12



SOLID  
H-V Yellow  
30562 50 53



NEW

SOLID  
Red  
30562 50 32



CONDOR  
White Black Red  
30562 52 32



METROPOLIS  
Matt Black Yellow  
30562 53 11



CAMO  
Matt Titanium Yellow  
30562 54 61



RONNIE  
White Green  
30562 55 02



RONNIE  
Titanium Violet  
30562 55 08



RONNIE  
Matt Silver Blue  
30562 55 04





**Airflow**





F562

ALWAYS AHEAD





# OF600 copter

## Shell

Certified ECE 22.05 & DOT  
1250 ± 50gr  
Made of HPTT  
2 Shells  
Oval

## Safety

Micrometric Buckle  
Multi - Density EPS

## Ventilation

Channelled EPS  
Top Vents

## 2 Shell Sizes

XS - S - M

L - XL - 2XL

## Visor

Sun Visor  
Quick Release System  
Scratch Resistant  
UV Resistant

## Comfort Liner

Laser-Cut Foam  
Removable and Washable  
Breathable  
Hypoallergenic





**SOLID**  
White  
30600 10 02



**SOLID**  
Matt Silver  
30600 10 03



**SOLID**  
Matt Titanium  
30600 10 07



**SOLID**  
Matt Black  
30600 10 11



**SOLID**  
Nardo Grey  
30600 37 04



**URBANE**  
Matt White Red  
30600 21 02



**URBANE**  
Matt Black H-V Yellow  
30600 21 11



**URBANE**  
Matt Blue Red  
30600 21 25



**NEW**

**CRISPY**  
White H-V Yellow  
30600 30 02



**NEW**

**CRISPY**  
Matt Military Green Orange  
30600 30 61





copter





OF600

ALWAYS AHEAD



**Bob C** OF601

**Bob HPFC** OF601

**Infinity** OF521

[illegible]





# OF601 **Bob c**

## Shell

Certified ECE 22.05 & DOT  
850 ± 50gr  
Made of Carbon  
3 Shells  
Oval

## Safety

Double D Ring  
Reinforced Chin Strap

## Accessories

Peak  
Magnetic Strap System

## 3 Shell Sizes

XS - S

M - L

XL - 2XL

## Inner Sun Visor

Scratch Resistant  
UV Resistant

## Comfort Liner

Real Leather + Fabric  
Laser - Cut Foam  
Removable & Washable  
Breathable  
Hypoallergenic





SOLID  
Matt Carbon  
30601 10 98







Bob c



OF601

ALWAYS AHEAD





OF601

# Bob HPFC

## Shell

---

Certified ECE 22.05 & DOT  
1000 ± 50gr  
Made of HPFC  
3 Shells  
Oval

## Safety

---

Double D Ring  
Reinforced Chin Strap

## Accessories

---

Peak  
Magnetic Strap System

## 3 Shell Sizes

---

XS - S

M - L

XL - 2XL

## Inner Sun Visor

---

Scratch Resistant  
UV Resistant

## Comfort Liner

---

Laser-Cut Foam  
Removable & Washable  
Breathable  
Hypoallergenic





SOLID  
Matt Black  
30601 10 11



SOLID  
Black  
30601 10 12



SOLID  
Nardo Grey  
30601 37 04



LINES  
Black Jeans  
30601 20 08





OF521

# Infinity HPFC

## Shell

Certified ECE 22.05 & DOT  
1250 ± 50gr  
Made of HPFC  
3 Shells  
Long Oval

## Safety

Micrometric Buckle  
Reinforced Chin Strap  
Multi - Density EPS  
Reflective Safety Patch

## Ventilation

Channelled EPS  
Top Vent  
Exhaust Port

## 3 Shell Sizes

2XS - XS - S

M - L

XL - 2XL - 3XL

## Visor

Twin Shield System  
Quick Release System  
Scratch Resistant  
UV Resistant  
Double Curvature

## Comfort Liner

Laser-Cut Foam  
Removable & Washable  
Breathable  
Hypoallergenic  
Magna Tech Liner  
Neck Roll





SOLID  
White  
30521 10 02



SOLID  
Matt Black  
30521 10 11



SOLID  
Nardo Grey  
30521 37 04



HYPER  
Matt Titanium H-V Yellow  
30521 22 07



**X-Force** MX703

**Subverter EVO** MX700

**Explorer C** MX701

**Explorer HPFC** MX701

**Pioneer EVO** MX436

**Fast EVO** MX437

[illegible]



# WORLDWIDE

# ||X

**CERTIFIED ECE 22.06 & DOT**  
**1300 ± 50GR**

**3 SHELL SIZES**

LONG OVAL

2XS-XS-S / M-L / XL-2XL-3XL



**CARBON**

Carbon Fibre is a material used extensively in the aeronautical industry and of course in the highly competitive world of Formula 1 and MotoGP. It has incredible strength but it's extremely light. LS2 uses multiple layers of our exclusive wide-weave carbon fibre for a very light, but strong shell that handles impacts in the most efficient and safe way.

**5 INNER SHELLS**

It is key to obtain a perfect fit to your head from outside to inside, as well as the shell, the configuración of the EPS liner, which should match closely the human head shape.



**DYNAMIC FLOW-THROUGH VENTILATION**

LS2 helmets feature a Dynamic Flow-through Ventilation. Fully adjustable intake ports and vented EPS work with the exhaust ports to create a constant, light flow of air helping light flow of air helping to keep the rider cool and comfortable.







# PEAK

ADJUSTABLE & RETRACTABLE PEAK

## SAFETY

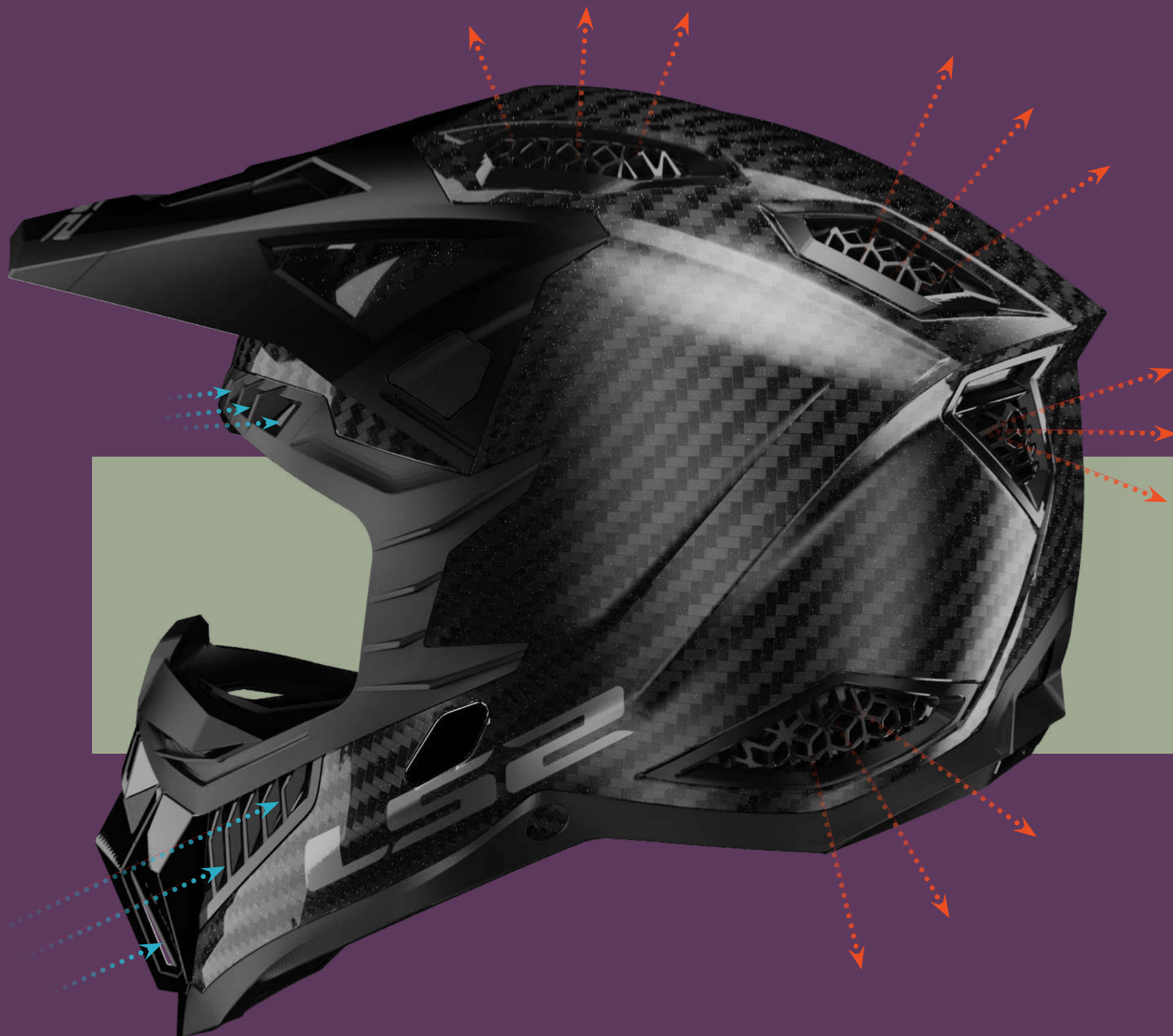
To ensure good protection the helmet must fit your head to perfection, special attention should be paid to the shell shape design and materials to minimize the effects of a possible impact. It is key to obtain a perfect fit to your head from outside to inside, as well as the shell, the configuración of the EPS liner, which should match closely the human head shape.

## COMFORT LINER

REMOVABLE AND WASHABLE  
BREATHABLE  
HYPOALLERGENIC  
LASER-CUT FOAM

# VENTILATION

MULTIPLE EXHAUST PORTS  
CHANNELED EPS  
AIR INTAKES





**MX703**

# X-Force

## Shell

Certified ECE 22.06 & DOT  
1300 ± 50gr  
Made of CARBON  
3 Shells  
Long Oval

## Safety

Double D-Ring  
Emergency Release System  
Reinforced Chin Strap  
Metal Security Plate  
Multi - Density EPS

## Ventilation

Channelled EPS  
Multiple Top Air Intakes  
Chin & Front Vent  
Multiple Exhaust Ports  
Adjustable & Retractable Peak

## 3 Shell Sizes

XS - S

M - L

XL - 2XL - 3XL

## Comfort Liner

Laser-Cut Foam  
Removable and Washable  
Breathable  
Hypoallergenic





NEW

SOLID  
Carbon  
40703 10 99



NEW

BARRIER  
Sky Blue  
40703 21 26



NEW

BARRIER  
H-V Yellow Green  
40703 21 54



NEW

BARRIER  
H-V Yellow Red  
40703 21 32



NEW

VICTORY  
Red White  
40703 22 32



NEW

VICTORY  
Fluo Pink Violet  
40703 22 46



NEW

VICTORY  
Titanium Orange  
40703 22 52



NEW

FIRESKULL  
Violet  
40703 23 74





**X-Force**



MX703

NEW Model  
2 0 2 1 / 2

ALWAYS AHEAD



KIRIAN MIRABET  
Enduro Rider



# X-Force





MX703

NEW Model  
2 0 2 1 / 2

ALWAYS AHEAD





MX700

# Subverter EVO

## Shell

Certified ECE 22.05 & DOT  
1300 ± 50gr  
Made of KPA  
3 Shells  
Long Oval

## Safety

Double D-Ring  
Emergency Release System  
Reinforced Chin Strap  
Metal Security Plate  
Multi - Density EPS

## Ventilation

Channelled EPS  
Multiple Top Air Intakes  
Chin Vent  
Multiple Exhaust Ports  
Adjustable Peak

## 3 Shell Sizes

XS - S

M - L

XL - 2XL - 3XL

## Comfort Liner

Laser-Cut Foam  
Removable and Washable  
Breathable  
Hypoallergenic





SOLID  
White  
40700 10 02



NOIR  
Matt Black  
40700 14 11



RASCAL  
Black Fluo Orange  
40700 21 12



CARGO  
Matt Blue Fluo Orange  
40700 23 23



CARGO  
Matt Military Green  
40700 23 62



ASTRO  
White Orange  
40700 24 02



ASTRO  
Cobalt H-V Yellow  
40700 24 24



NEW

STOMP  
White Black  
40700 30 02



NEW

STOMP  
Fluo Orange Black  
40700 30 52



NEW

STOMP  
H-V Yellow Black  
40700 30 54



NEW

ARCHED  
Black Silver Titanium  
40700 31 04



NEW

ARCHED  
Black Yellow Red  
40700 31 54





Subverter EVO





MX700

ALWAYS AHEAD





MX701

# Explorer c

## Shell

Certified ECE 22.05 & DOT  
1380 ± 50gr  
Made of Carbon  
3 Shells  
Long Oval

## Safety

Double D Ring  
Emergency Release System  
Reinforced Chin Strap  
Metal Security Plate  
Multi-Density EPS  
Visor Button Lock

## Ventilation

Channelled EPS  
Chin Vent  
Top Vents  
Multiple Exhaust Ports

## 3 Shell Sizes

XS - S

M - L

XL - 2XL

## Visor

Twin Shield System  
Scratch Resistant  
UV Resistant  
Ready for Pinlock Max Vision

## Comfort Liner

Laser-Cut Foam  
Removable and Washable  
Breathable  
Hypoallergenic  
Chin Curtain





SOLID  
Carbon  
40701 50 99



FRONTIER  
Titanium Red  
40701 61 08



FRONTIER  
Black Blue  
40701 61 12



FOCUS  
Matt Titanium H-V Yellow  
40701 62 07



FOCUS  
Blue White Red  
40701 62 26



EXTEND  
Matt Military Green  
40701 70 61



EXTEND  
Matt Red  
40701 70 31



EXTEND  
Matt H-V Yellow  
40701 70 53





Explorer C





MX701

ALWAYS AHEAD





MX701

# Explorer HPFC

## Shell

Certified ECE 22.05 & DOT  
1380 ± 50gr  
Made of Carbon  
3 Shells  
Long Oval

## Safety

Double D Ring  
Emergency Release System  
Reinforced Chin Strap  
Metal Security Plate  
Multi-Density EPS  
Visor Button Lock

## Ventilation

Channelled EPS  
Chin Vent  
Top Vents  
Multiple Exhaust Ports

## 3 Shell Sizes

XS - S

M - L

XL - 2XL

## Visor

Twin Shield System  
Scratch Resistant  
UV Resistant  
Ready for Pinlock Max Vision

## Comfort Liner

Laser-Cut Foam  
Removable and Washable  
Breathable  
Hypoallergenic  
Chin Curtain





SOLID  
White  
40701 10 02



SOLID  
Matt Black  
40701 10 11



ATLANTIS  
White Red Blue  
40701 20 02



ATLANTIS  
Matt Titanium  
40701 20 07



ALTER  
Matt Black H-V Yellow  
40701 21 54



ALTER  
Matt Black Fluo Orange  
40701 21 52



ALTER  
Matt Black White  
40701 21 02





MX436

# Pioneer EVO

## Shell

Certified ECE 22.05 & DOT  
1350 ± 50gr  
Made of KPA  
3 Shells  
Long Oval

## Safety

Emergency Release System  
Micrometric Metal Buckle  
Reinforced Chin Strap  
Metal Security Plate  
Multi - Density EPS

## Ventilation

Channelled EPS  
Top Vents  
Chin Vent  
Side Vents  
Exhaust Ports

## 3 Shell Sizes

2XS - XS - S

M - L

XL - 2XL - 3XL

## Visor

Twin Shield System  
Scratch Resistant  
UV Resistant  
Ready for Pinlock Max Vision

## Comfort Liner

Laser-Cut Foam  
Removable and Washable  
Breathable  
Hypoallergenic





SOLID  
Titanium  
40436 20 07



SOLID  
Matt Black  
40436 20 11



KNIGHT  
Titanium Fluo Orange  
40436 28 50



ROUTER  
Matt Black H-V Yellow  
40436 31 54



EVOLVE  
White Cobalt  
40436 33 24



EVOLVE  
Red White  
40436 33 32



NEW

ADVENTURER  
Matt Black Orange  
40436 40 51



NEW

ADVENTURER  
Black White  
40436 40 02



NEW

ADVENTURER  
Matt Black Red  
40436 40 31





MX437

# Fast EVO

## Shell

Certified ECE 22.05 & DOT  
1150 ± 50gr  
Made of KPA  
3 Shells  
Long Oval

## Safety

Double D Ring  
Emergency Release System  
Reinforced Chin Strap  
Metal Security Plate  
Multi - Density EPS

## Ventilation

Channelled EPS  
Top Vents  
Chin Vent  
Side Vents  
Exhaust Ports

## 3 Shell Sizes

2XS - XS - S

M - L

XL - 2XL - 3XL

## Comfort Liner

Laser-Cut Foam  
Removable and Washable  
Breathable  
Hypoallergenic





**SOLID**  
Matt Black  
40437 20 11



**ROAR**  
Matt Black Red  
40437 32 32



**ROAR**  
Matt Black H-V Yellow  
40437 32 54



**CRUSHER**  
Black H-V Yellow  
40437 34 12



**ALPHA**  
Matt Blue  
40437 36 25



**XCODE**  
Matt Fluo Orange Blue  
40437 37 52



**XCODE**  
White Violet  
40437 37 75



**NEW**

**STRIKE**  
Black White Red  
40437 40 32



**NEW**

**VERVE**  
Black White  
40437 41 02



**NEW**

**VERVE**  
Black Fluo Pink  
40437 41 46



**Rapid Mini** FF353

**Funny** OF602

**Fast** MX701

JUNIOR  
JUNIOR  
JUNIOR  
JUNIOR  
JUNIOR  
**JUNIOR**





FF353

# Rapid Mini

## Shell

Certified ECE 22.05 & DOT  
1200 ± 50gr  
Made of HPTT  
1 Shell  
Long Oval

## Safety

Micrometric Buckle  
Neck Roll

## Ventilation

Chin Vent  
Top Vents  
Exhaust Port  
Breath Deflector

## 1 Shell Size

S - M - L

## Visor

Quick Release System  
Scratch Resistant  
UV Resistant  
Ready For Pinlock Max Vision

## Comfort Liner

Laser - Cut Foam  
Neck Roll  
Chin Curtain  
Removable & Washable  
Breathable  
Hypoallergenic





SOLID  
White  
10353J 10 02



SOLID  
Matt Black  
10353J 10 11



NEW

VIGNETTE  
Black H-V Yellow  
10353J 30 54



NEW

VOODOO  
Black Red  
10353J 31 32



NEW

VOODOO  
Black Fluo Pink  
10353J 31 46

	- IVA (21%)	PVP
SOLID	73,55 €	89,00 €
GRAPHIC	81,82 €	99,00 €





OF602

# Funny

## Shell

Certified ECE 22.05 & DOT  
800 ± 50gr  
Made of HPTT  
1 Shell  
Oval

## Safety

Micrometric Buckle

## Ventilation

Top Vents  
Lateral Exhaust Ports

## 1 Shell Size

S - M - L

## Visor

Quick Release System  
Scratch Resistant  
UV Resistant

## Comfort Liner

Laser - Cut Foam  
Breathable  
Hypoallergenic





SOLID  
White  
30602 10 02



SOLID  
Red  
30602 10 32



SOLID  
Pink  
30602 10 46



CROCO  
White  
30602 20 61



CRUNCH  
White H-V Yellow  
30602 21 54



SLUCH  
Red White  
30602 22 32

	- IVA (21%)	PVP
SOLID	65,29 €	79,00 €
GRAPHIC	73,55 €	89,00 €





MX347

# Fast EVO

## Shell

---

Certified ECE 22.05 & DOT  
1050 ± 50gr  
Made of KPA  
1 Shell  
Long Oval

## Safety

---

Emergency Release System  
Double D Ring  
Reinforced Chin Strap  
Metal Security Plate  
Multi - Density EPS

## Ventilation

---

Channelled EPS  
Top Vents  
Chin Vent  
Side Vents  
Exhaust Ports

## 1 Shell Size

---

S - M - L

## Comfort Liner

---

Laser-Cut Foam  
Removable and Washable  
Breathable  
Hypoallergenic





SOLID  
Matt Black  
40437J 20 11



CRUSHER  
Black H-V Yellow  
40437J 34 12



NEW

XCODE  
Matt Fluo Orange Blue  
40437J 37 52




NEW

STRIKE  
Black White Red  
40437J 40 32

	- IVA (21%)	PVP
SOLID	90,08 €	109,00 €
GRAPHIC	98,35 €	119,00 €





All of the characteristics, technical and design specifications, materials, and the external appearance of the models listed in this catalogue are correct as of the time of last review. Subject to modifications.

LS2 is not responsible for possible printing errors and unavoidable color differences between the images herein and the actual product.

**DISTRIBUTED IN EUROPE BY:**

TECH DESIGN TEAM S.L.  
Pol. Ind. Plà de la Bruguera  
C/Solsonés nº81 - 08211  
Castellar del Vallés  
Barcelona - Spain  
Tel.: +34 937 310 060  
Fax +34 937 318 393

**DISTRIBUTED IN U.S.A. AND CANADA BY:**

ALLWIN POWERSPORTS CORPORATION  
22555 White Oak Circle Aurora, IL  
60502 U.S.A.  
Tel.: +1630 236 2366  
Fax +1630 236 2367

Regarding possible modifications,  
the changes are available on our website:

[www.LS2helmets.com](http://www.LS2helmets.com)

**Always  
Ahead**

HELMETS COLLECTION

2021 / 2022

**ALW  
AYS  
AHE  
AD**

[WWW.LS2HELMETS.COM](http://WWW.LS2HELMETS.COM)